



UNMATCHED LOCATION, ENDLESS POSSIBILITIES



SHOWROOMS & OFFICES

(FOR LONG TERM LEASE ONLY)

ABOUT GROUP

From last 20 years Dhanuka Group is proving itself by making true sense of its punchline 'Hum Sapna Such Karte Hain'. Dhanuka Group has done a fabulous work by changing the lifestyle of the Jaipurites and fulfilled the dream of thousands of people. The Journey that started from Sunshine Residency in 2002 is now reaching to new heights. The Carvan of Sunshine Homes is perfectly dominated to provide a dreamful life. Utmost luxury, superb construction quality and state-of-the-art technique makes the Dhanuka Group a real leader of the industry.

The milestone achieved by Dhanuka Group is a result of hard work, positive attitude, dedication and prudent thinking of Late Chairman Mr. Girish Dhanuka. Following the mantra "Vision with Action can change the World" Dhanuka Group is progressing towards changing the parameters of real estate industry.

The vision of Dhanuka Group is "to build buildings not only with cement and steel but with a humane touch, to provide better spaces and better living to all its customers spanning residential, commercial, integrated townships, malls, multiplexes and hospitality sectors." Commitment, integrity, quality and innovation are the main core values of Dhanuka Group that inspires the group to perform some steps ahead than the competitor.

Also, Dhanuka Realty Limited is the First Real Estate company from Rajasthan to be publicly listed on NSE Emerge.

Few of our Previous Projects @ Jaipur

Sunshine Krishna, I-II Gopal Pura Bye Pass	Sunshine Orchid Shri Gopal Nagar	Sunshine Residency Bani Park Extension
Sunshine Palm Sikar Road, Ambabari	Sunshine Shalimar Vidyut Nagar Main Road	Sunshine Bhagat Sikar Road
Sunshine Kalyan Main Sikar Road, Ambabari	Sunshine Siddharth Sikar Road, Ambabari	Sunshine Prime Mansarovar Ext.
Sunshine Signature Sikar Road, Ambabari	Sunshine Krishna, III Gopal Pura Bye Pass	Sunshine Vrindavan Shri Gopal Nagar
Sunshine Symphony Ajmer Road	Sunshine Aditya Vaishali Nagar	Sunshine Sheodan Heights Vivek Vihar





UNMATCHED PROJECT

Dhanuka Group, once again with its expertise in constructing state of the art iconic structures has launched "Sunshine Unity Enclave" at a super prime location of Jaipur, adjacent to Vivek Vihar, Metro Station, New Sanaganer Road. It is a JDA approved commercial project which offers Showrooms and Office Spaces on plot with 100 feet and 30 feet roads in front and back side respectively. It has Ground + 5 floors along with a terrace which are tactfully planned keeping in mind the present and future practices of retail merchandising and office management.

Competitive rental yields compared to market benchmarks

Strong capital appreciation in a fast-developing commercial zone

Proven track record of high ROI in projects like Sunshine Sheodan Heights

Ideal for offices, showrooms, retail outlets, or co-working spaces

Demand from national/international brands and corporate tenants

Earlier project include brands like Indus Ind, KFC, OLX Bosch, Indra IVF, Belgian waffle & SBI Life



KFC



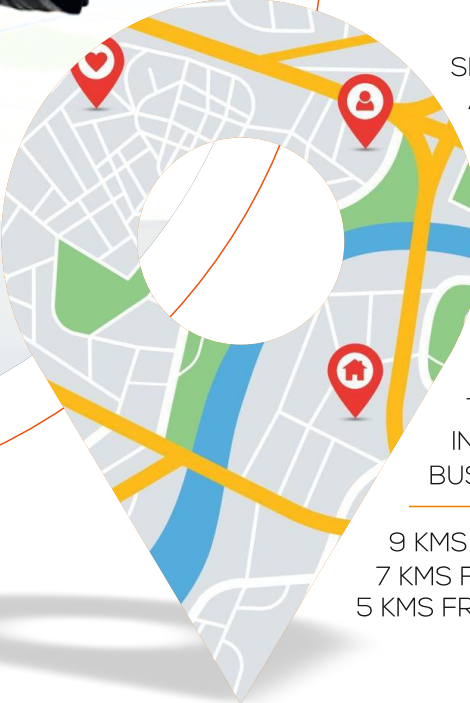
BOSCH





UNMATCHED LOCATION

The vicinity around Sunshine Unity Enclave has a lucrative retail and office potential owing to the higher purchasing power capacity of the HNI individuals residing in the posh areas of Civil Lines, Shyam Nagar, Sodala and Nirman Nagar. A high density residential neighbourhood with easy connectivity from all corners of Jaipur ensures maximum business in the area.



SITUATED AT HEART OF THE CITY,
ADJACENT TO VIVEK VIHAR
METRO STATION,
NEW SANAGANER ROAD

TWO SIDE ROADS GIVING PERFECT
APPROACH TO YOUR BRAND

ALL KINDS OF PUBLIC
TRANSPORT AVAILABLE
INCLUDING METRO,
BUS, CABS ETC.

9 KMS FROM AIRPORT,
7 KMS FROM BUS STAND &
5 KMS FROM JAIPUR JUNCTION



UNMATCHED SHOWROOM SPACE

The perfect marketplace for Premium Brands. The aesthetically designed swanky glass-front showroom will not just offer great visibility, but also increase footfalls as the entire neighbourhood will serve as a potential customer base waiting to be enthralled

Attractive Storefront make Eye-catching signage, displays, and architecture.

Well-Designed Layout is easy to navigate, ample space, & strategic product placement.

Effective lighting to highlight products and create ambiance.

High Visibility for potential customers to notice & act.

Accessibility to conveniently located near by transportation hubs, major roads & public services.

Beamless Structure gives seamless visibility across the entire showroom



UNMATCHED RETAIL SPACE

Ultramodern office/showroom spaces at a centralized location will help your workforce to maintain perfect work life balance, thereby increasing productivity and profitability of your organization

Offers maximum transparency into the showroom with 80 feet front on 100 feet road

Enhances natural lighting and product visibility from the outside.

Welcoming and luxurious feel with Modern architecture & elevation

High Street or Location that help Easy to spot by pedestrians and passing vehicles.

Large, Transparent Windows to showcase products from outside.

Large floor plate gives multiple options to merchandise your products



UNMATCHED OFFICE SPACE

Sunshine Unity Enclave is not just another business address. It is a landmark for businesses to operate and flaunt their success.

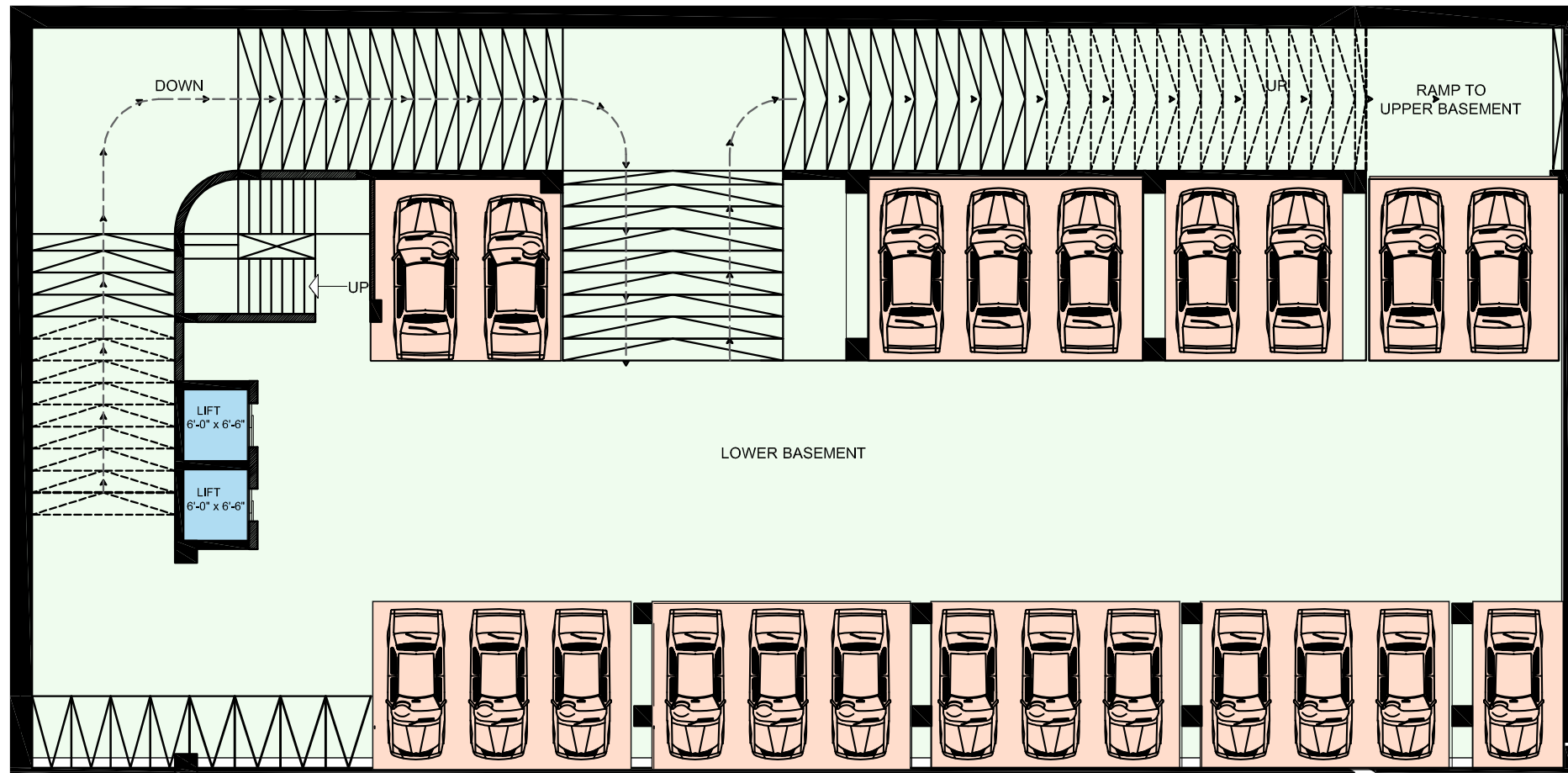
Direct access to the metro station, making it convenient for employees and clients to commute.

Prime location can lead to increased demand and potential for business growth.

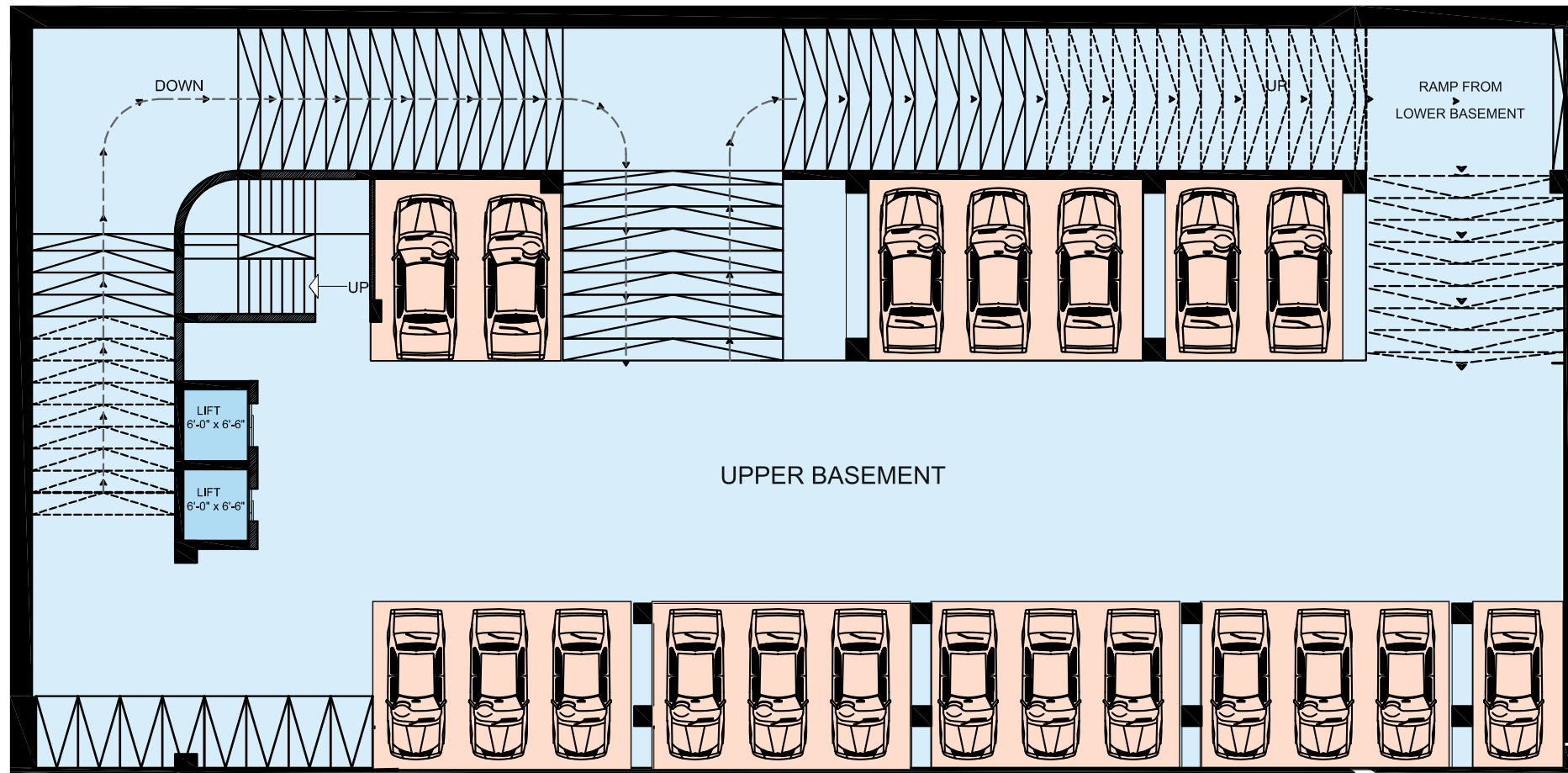
Easy to commute and convenient location can boost employee morale and productivity.

Symmetrical floor helps in getting maximum work station with zero loss of space

LOWER BASEMENT PLAN PARKING SPACE



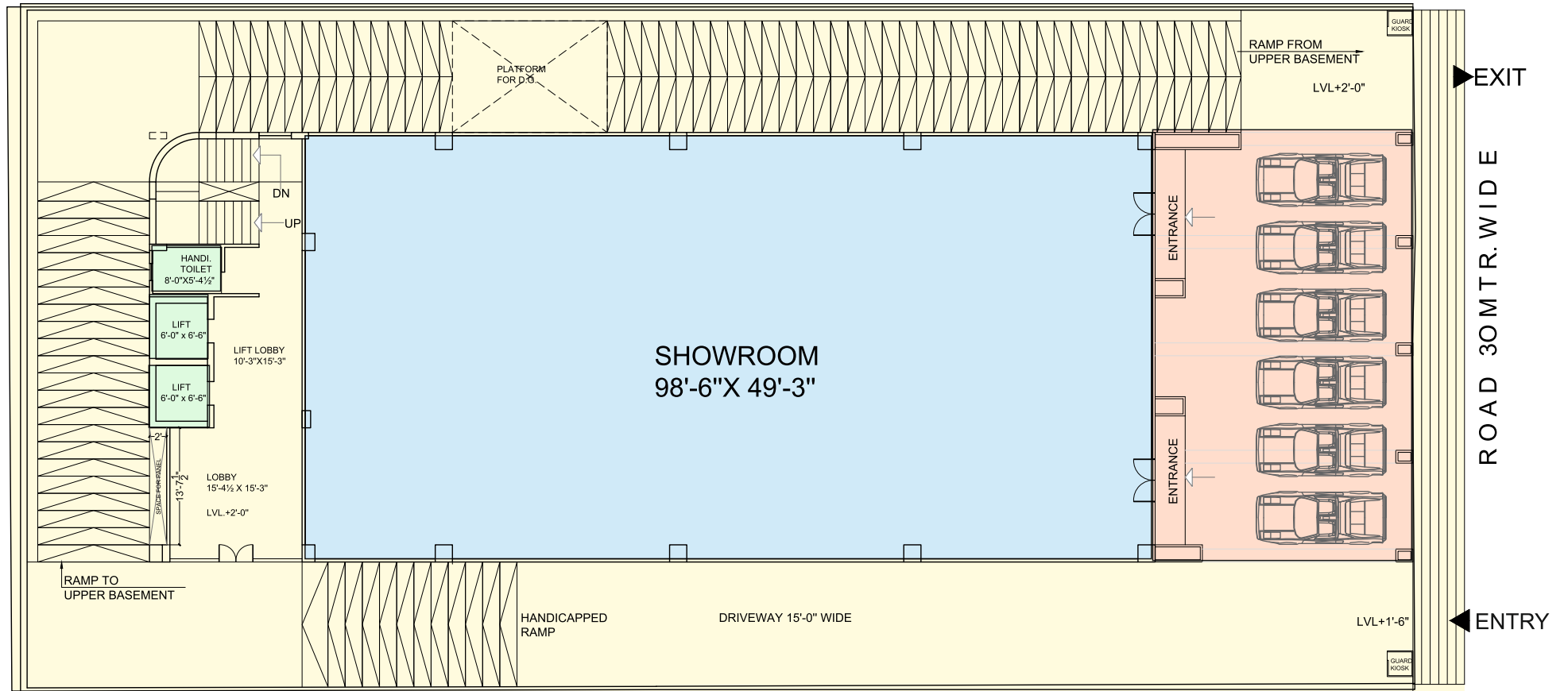
UPPER BASEMENT PLAN PARKING SPACE



GROUND FLOOR PLAN SHOWROOM SPACE

BUILT UP AREA : 4963sq.ft

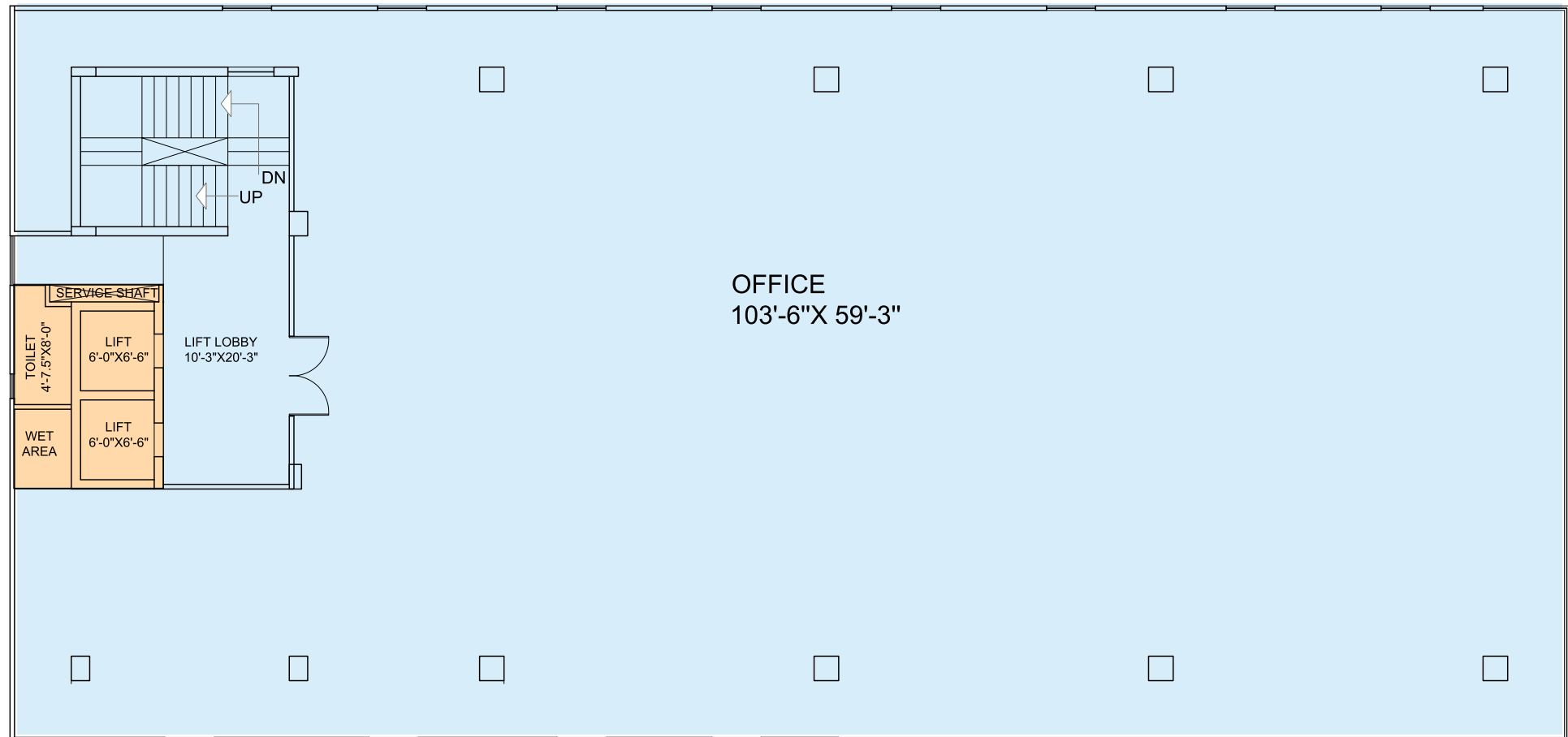
SUPER BUILT UP AREA : 7444sq.ft



TYPICAL FLOOR PLAN OFFICE SPACE

BUILT UP AREA : 6978sq.ft

SUPER BUILT UP AREA : 10467sq.ft





Sunshine Realty Developers Pvt. Ltd.

5th, Floor Soliatir Building, Plot No. C212 & 213, Gautam Marg,
Hanuman Nagar, Vaishali Nagar, Jaipur-302021, Rajasthan
• +91-141-4014792 • Mail: info@dhanukarealty.in
• Web.: www.dhanukarealty.in • CIN : U45200RJ2011PTC035038

Call | 87692 20000

Disclaimer: The imagery used in this brochure are indicative of style only. Photographs of interiors, surrounding views and location may have been digitally enhanced or altered and do not represent actual views or surrounding views. These photographs are indicative only. The information contained herein is believed to be correct but not guaranteed. Prospective purchasers should make and must rely on their own enquiries. The colour of the building is indicative only. This brochure is a guide only and does not constitute an offer or contract. The company will not be liable for any legal course of action by any visitor for relying on the information